

FOUR CHANNEL PHASED ARRAY Superficial Femoral Artery Coil

Description

The Four Channel Phased Array Superficial Femoral Artery Coil is designed for proton imaging of the Superficial Femoral Artery. The semi-flexible construction allows easy application of the coil around the leg causing minimal patient discomfort.

Applications

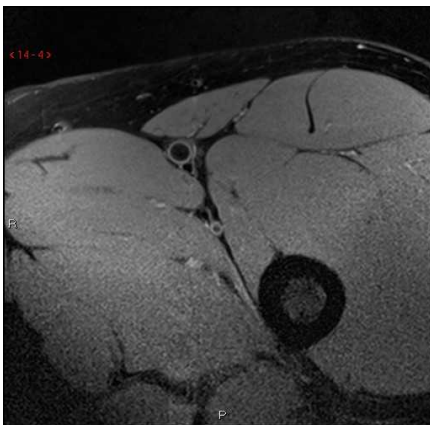
The Superficial Femoral Artery Coil enables sub-millimeter resolution of the Superficial Femoral Artery, vessel walls, and atherosclerotic plaques.

System/Accessories

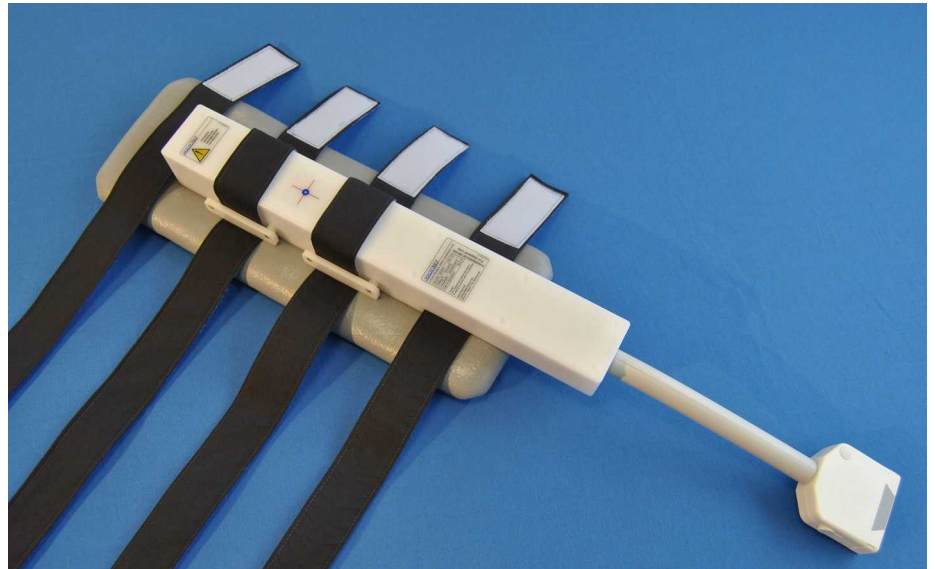
- + Superficial Femoral Artery Coil assembly
- + Attachment straps
- + Manual

Warranty

Product is warranted during a period of one year. Repairs or replacements will be made free of charge for materials and labor.



Design and specifications subject to change without notice.
Doc. #4-425-ST30, 02



Specification

Mechanical Properties

- + Effective length of coil : 360 mm
- + Effective width of coil : 110 mm
- + Material in contact with patient : Non-toxic, non-irritating coated polymer foam
- + Connector : Siemens 4 channel 3T interface model 08625787

Electrical Properties

- + Coil type : Receive only (four channel PA)

Compatibility

- + Siemens MAGNETOM Trio, A Tim System
- + Siemens MAGNETOM Verio

Due to Siemens restrictions coil is recognized as "Carotid Coil".

Approvals

The Superficial Femoral Artery Coil is a class I medical device in compliance with the European Medical Device Directive.



Please contact us for order information and a complete list of our products and system compatibilities.

MACHNET